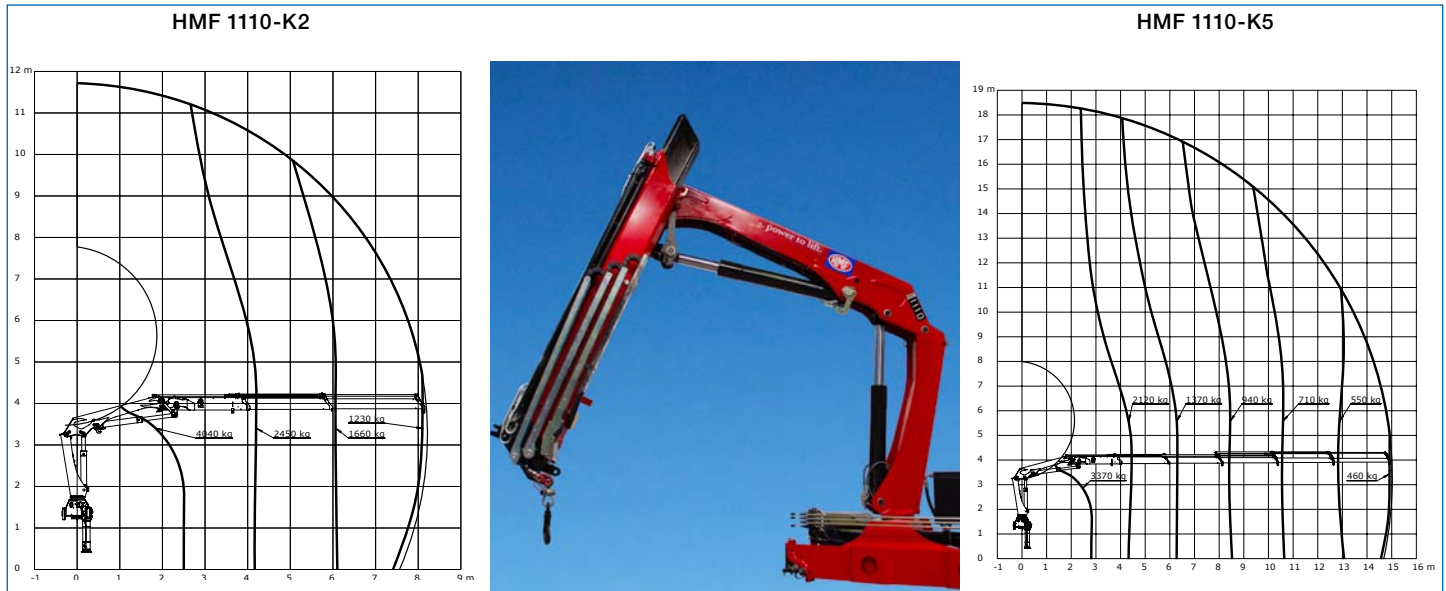


Loading group B3		1110-K1	1110-K2	1110-K3	1110-K4	1110-K5
Load moment	tm	10.7	10.3	10	9.7	9.4
Hydraulic reach	m	6.1	8.2	10.5	12.7	15
Height above mounting surface	mm	2135	2135	2135	2135	2135
Width	mm	2500	2500	2500	2500	2500
Length of crane, no extra valves	mm	747	747	747	747	747
Max. stabilizer spread, long	mm	5590	5590	5590	5590	5590



The HMF 1110-K model with single Power Plus link arm system and manual ground control or stand-up controls and fixed flow pump.

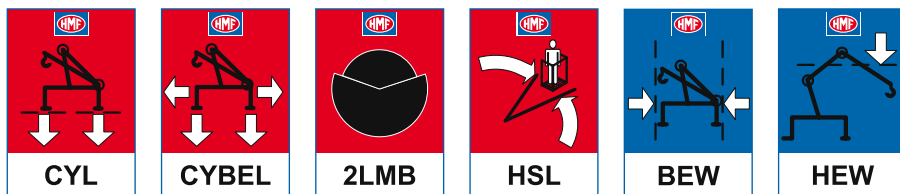
Superior strength and low tare weight, operational safety and a nice and wear-resistant design make this crane an extremely versatile and powerful working tool.

This crane has up to 5 hydraulic extensions, and can be equipped with hydraulically extensible stabilizer beams and swing-up stabilizer legs (option).

It has been manufactured in high-tensile steel and with its particularly low tare weight and the longest reach within its range of as much as 15.0 in the K5 version, there is a lot of power for lifting heavy loads at a long reach.

A well proportioned hydraulic system, an optimized crane geometry and the RCL Safety System guarantee an efficient, fast and safe HMF loader crane.

### Safety:



### Operation/equipment:

