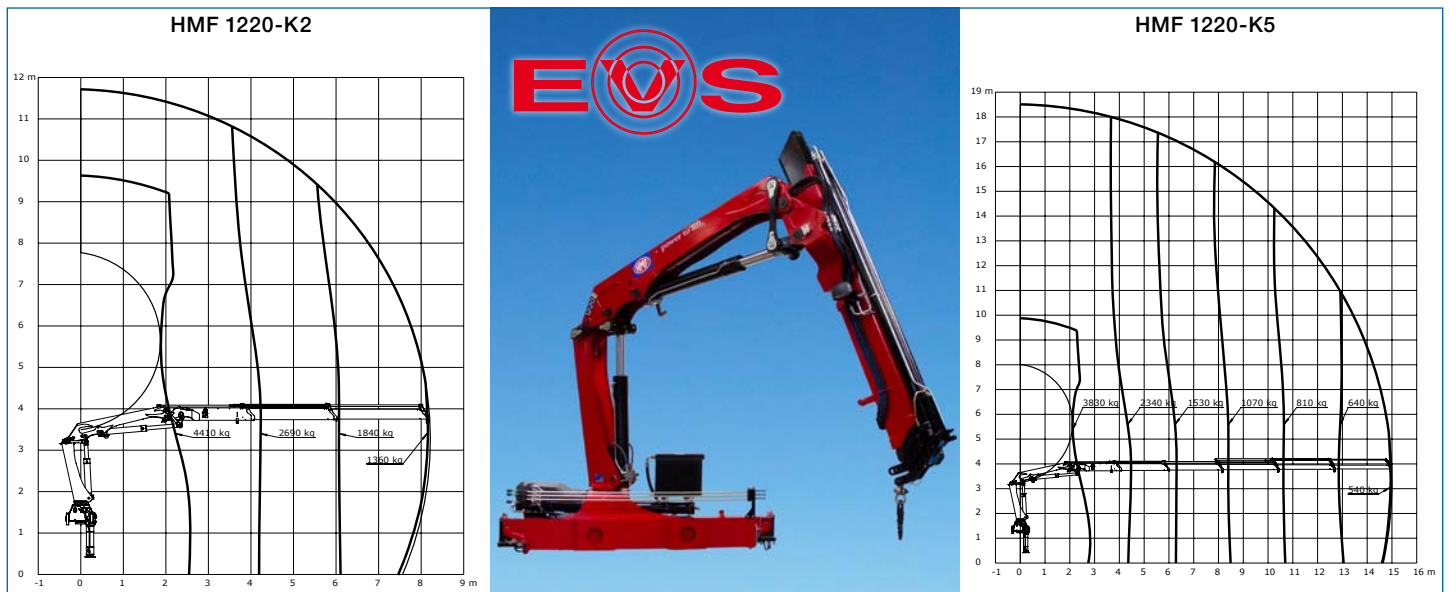


Loading group B3		1220-K1	1220-K2	1220-K3	1220-K4	1220-K5
Load moment	tm	11.7	11.4	11.0	10.7	10.5
Hydraulic reach	m	6.1	8.2	10.5	12.7	15.0
Height above mounting surface	mm	2135	2135	2135	2135	2135
Width	mm	2500	2500	2500	2500	2500
Length of crane, no extra valves	mm	747	747	747	747	747
Weight incl. stabilizers	kg	1285	1410	1520	1615	1700
Max. stabilizer spread, long	mm	5590	5590	5590	5590	5590



The HMF 1220-K-RC-d model with dual Power Plus link arm system, HDL-d speed adaptation system, RC-d proportional control valve with SC2 radio remote control for a very fast and precise handling. Fixed or variable flow pump.

HMF loader cranes are efficiently protected to withstand the elements thanks to powder coating, ZetaCoat pre-treatment and galvanization. HMF's EQC high-quality surface treatment offers a far better corrosion protection than other types of surface treatment.

Can be equipped with HMF's load-dependent EVS system monitoring and ensuring the stability of the vehicle.

The HMF InfoCentre (option) provides information concerning the current condition of the crane in the display of the remote control box. With the HMF InfoCentre on the remote control box the operator receives all relevant information such as current load moment on the crane, in case of EVS also current stability, 90 % warnings, error messages etc.

This crane has up to 5 hydraulic extensions and can be equipped with hydraulically extensible stabilizer beams and swing-up stabilizer legs (option).

The crane has been manufactured in high-tensile steel and with its particularly low tare weight and the longest reach within its range of as much as 15.0 in the K5 version, there is a lot of power for lifting heavy loads at a long reach.

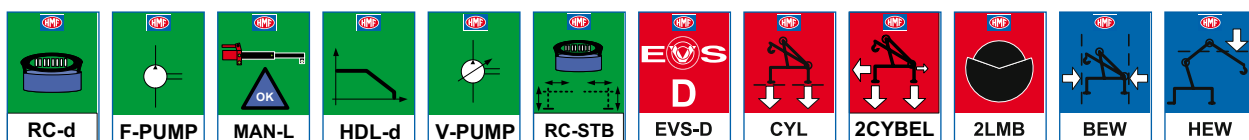
A high performance hydraulic system, an optimized crane geometry and the RCL Safety System guarantee a highly efficient, very fast and safe HMF loader crane.

All hoses are fed internally. Hoses fed inside the column give a nice minimalistic design and a long life span of the hoses. Inside the stabilizer beams they are also fed in nylon drag chains, where they are protected against wear and squeezing damage.

Superior strength and low tare weight, operational safety and a nice and wear-resistant design make this crane an extremely versatile and powerful working tool.

When selecting radio remote controlled stabilizers you obtain maximum freedom to operate all stabilizer functions from the position where you have the best view and visibility, the best and most appropriate working position and thereby the fastest and most efficient way to carry out the work.

Operation/equipment:



Safety:

