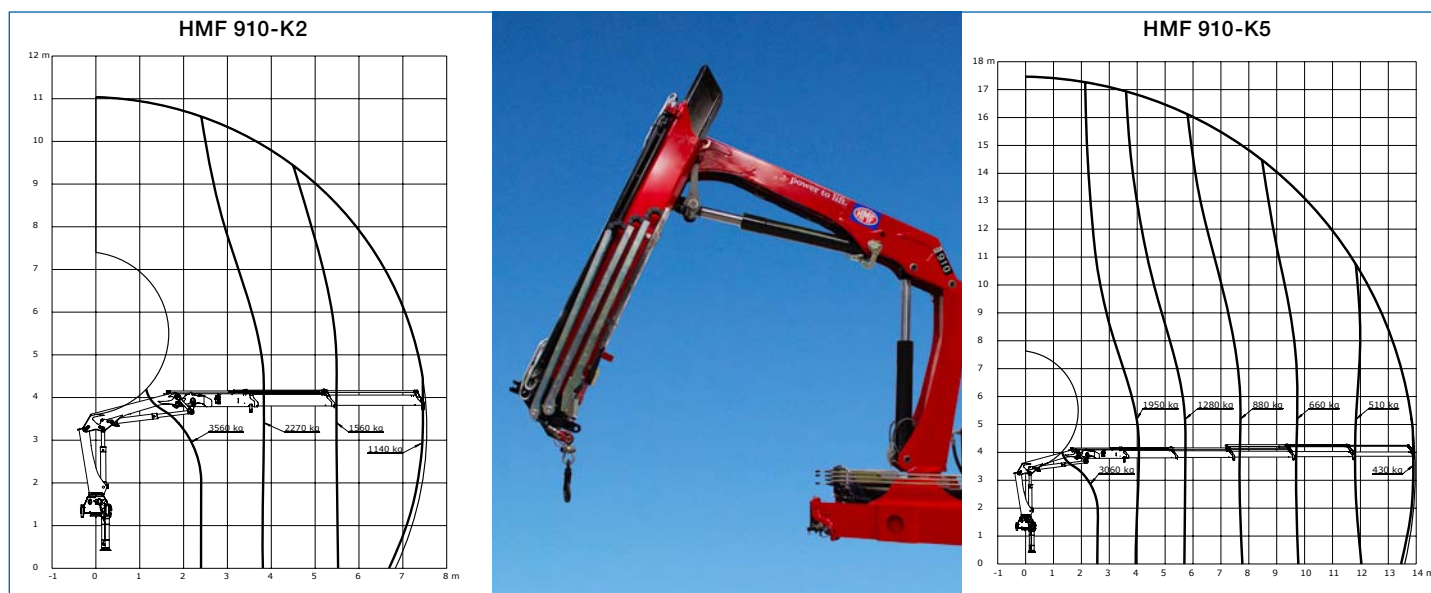


Loading group B3		910-K1	910-K2	910-K3	910-K4	910-K5
Load moment	tm	9.0	8.7	8.5	8.2	8.0
Hydraulic reach	m	5.5	7.5	9.7	11.8	14.0
Height above mounting surface	mm	2135	2135	2135	2135	2135
Width	mm	2350	2350	2350	2350	2350
Length of crane, no extra valves	mm	747	747	747	747	747
Max. stabilizer spread, long	mm	5140	5140	5140	5140	5140



The HMF 910-K model with single Power Plus link arm system and manual ground control or stand-up controls and fixed flow pump.

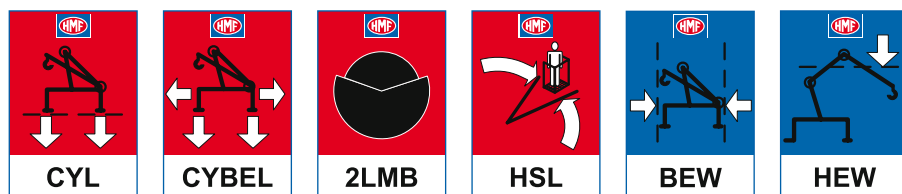
It has been manufactured in high-tensile steel and with its particularly low tare weight and the longest reach within its range of as much as 14.0 m the K5 version, there is a lot of power for lifting heavy loads at a long reach.

A well proportioned hydraulic system, an optimized crane geometry and the RCL Safety System guarantee an efficient, fast and safe HMF loader crane.

This crane has up to 5 hydraulic extensions, and can be equipped with hydraulically extensible stabilizer beams and swing-up stabilizer legs (option).

Superior strength and low tare weight, operational safety and a nice and wear-resistant design make this crane an extremely versatile and powerful working tool.

### Safety:



### Operation/equipment:

