

1580-T





HMF 1580-T Series

- A New, Terrific Loader in the 16 tm Range



The RCL 5100 is HMF's new, user friendly safety system. The system consists of an electronic controller, an indicator panel, a dump valve, a pressure transducer and a control valve sensor. The built-in microprocessor is monitoring the loader's load moment and function.

The HMF 1580-T Series is especially designed to meet all the demands of the professional operator using the loader for recovery tasks. The 1580-T Series is therefore available in two versions.

The T3-version has 3 hydraulic extensions with a lifting capacity of 1,700 kg at a hydraulic reach of 8.8 m. This model is especially developed for removing parked cars in town centres, where high working speed and precise operation are important characteristics.

The model equipped with 4 hydraulic extensions has a hydraulic out-reach of 10.9 m with a lifting capacity of 1,190 kg. This model is mainly meant for recovery service vehicles.

RCL 5100 - The 100% User Friendly Safety System

As a successor for the traditional LMB System HMF has developed the RCL 5100 which is a very user friendly safety system.

By means of the built-in micro processor the RCL 5100 is constantly monitoring the loader's condition as regards load moment, operation and function. The system has been designed to enable the user to handle the loader out from overload situations.

With the RCL 5100 the operator can check by means of the system at which point the load moment of the loader is being utilized. In this way he has the possibility of avoiding unnecessary overload situations. The fewer times the loader is working over 100% capacity, the less wear and tear and the longer life span!



The HMF control valves are famous world-wide for their safe, precise, and fast operation. The control panel is simple, well-arranged and designed in accordance with the regulations for CE-marking.

The 1580-T Series Completes the HMF Range of Telescopic Loaders

With the 1580-T Series, HMF has developed a brand new, strong T-loader for recovery service vehicles with the most up-to-date design. On the basis of more than 50 years' experience HMF has combined light and compact structure with great strength.

Further Characteristics of the 1580-T Series are:

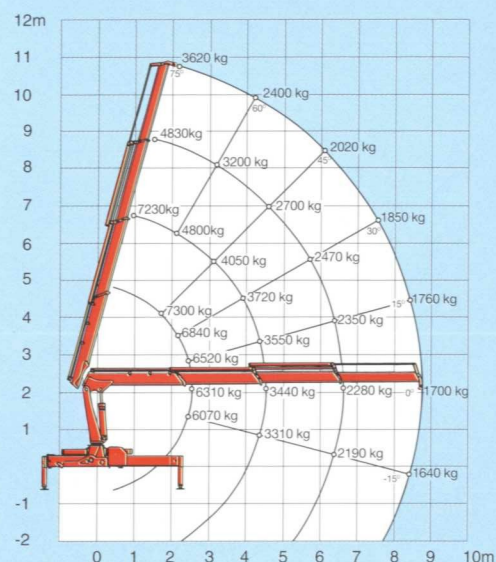
- Very user friendly and precise operation
- High working speed
- Flexible and smooth-running extensions in hexagon profile
- Low self weight
- Minimum space requirements of only 741 mm
- Hose guide for extra valves with nylon drag chain to avoid unnecessary wear and tear on the hoses
- Considerable range of optional extras



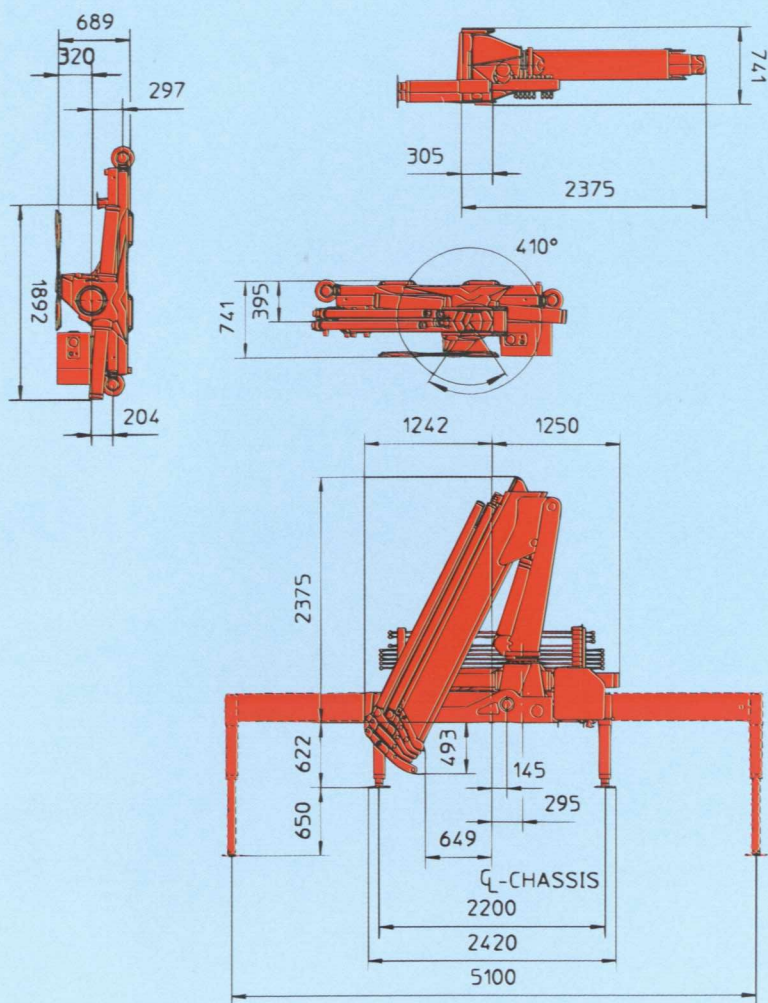
Technical data, HMF 1580-T Series

Loading Group B3		1582-T3	1582-T4
Load moment	tm	16,0	15,7
Hydraulic reach	m	8,8	10,9
Slewing angel	°	410	410
Slewing torque	kgm	2000	2000
Height above chassis	mm	2375	2375
Length	mm	2492	2492
Width without extra valves	mm	741	741
Width incl. extra valves	mm	741	741
Stabilizer spread, std.	mm	5100	5100
Stabilizer spread, spec.	mm	6430	6430
Weight without stabilizers	kg	1605	1755
Weight of stabilizers	kg	250	250
Working pressure	MPa	21,5	21,5
Pump performance	l/min.	50	50
Power consumption	kW	18	18
Oil tank capacity in base	l	20	20
Oil tank capacity, sep. tank	l	80	80

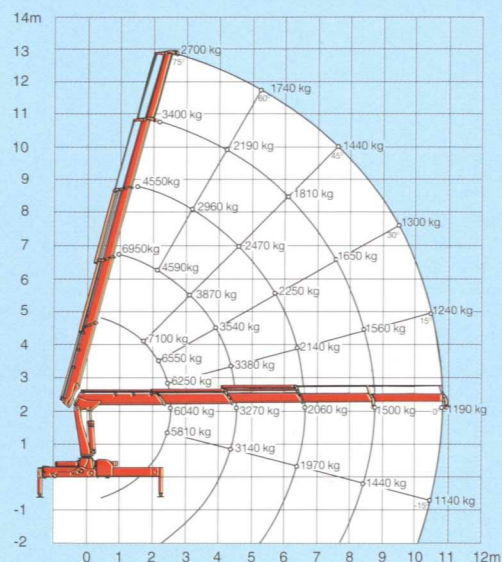
1582-T3



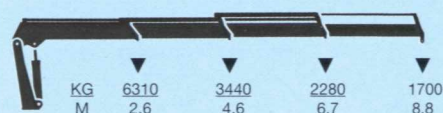
Dimension sketch



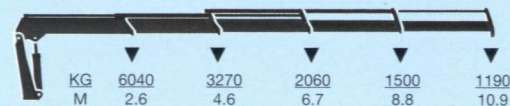
1582-T4



1582-T3



1582-T4





HMF: A Reliable Partner

HMF is amongst the world's leading manufacturers of transport hydraulics and equipment. With a total floor area of more than 70,000 square metres and over 50 years of experience HMF is able to handle the largest projects. HMF products are marketed, sold, and serviced by an extensive network of subsidiaries, dealers, and agents in more than 50 countries around the world.

HMF makes heavy demands on the manufacturing process and all HMF loaders are subjected to a rigorous test programme. On top of that, a well-assorted spare parts stock ensures a speedy delivery of spare parts.

The Highest Quality

HMF is the first truck loader manufacturer in the world to have obtained certification in accordance with the international ISO-9000 standard.

The HMF quality control system is designed to ensure a uniform standard in all HMF products and is subject to control from the certifying organization, Lloyd's Register Ltd. thus ensuring that all HMF products comply with the strict quality requirements laid down by HMF.



ООО «В-КРАН»

Фактический адрес:
194292, Санкт-Петербург, пр. Культуры, 40
Промзона «Парнас»

Почтовый адрес:
194292, Санкт-Петербург, а/я 112.
Тел: (812) 449-13-80, 972-40-40
Тел/факс: (812) 449-13-80, 449-13-83

www.v-kran.ru
e-mail: sale@v-kran.ru



Højbjerg Maskinfabrik A/S
200, Oddervej
DK-8270 Højbjerg
Tel. +45 86 27 08 00
Fax +45 86 27 07 44



We reserve the right to introduce improvements and modifications