

1720-T



INTRODUCING

HMF 1720-T Series

– A brand new Telescopic HDL-Loader in the 18 tm Range

The 1720 Series is fitted with an HDL system (Heavy Duty Lifting) and is based on the recently developed 1580 Series. With the 1720 loader the lifting capacity is increased by more than 10%. The loader's application possibilities are extended and the demand for flexibility and solving of many different jobs achieved.

While the lifting capacity increases, weight and space requirements remain the same.

Stepless activation ensures that the operator can work with "normal" and HDL-operation bands without experiencing jerks or other sudden movements.

The 1720-T Series is available in two versions: the 1722-T3 having a max. lifting capacity of 6.310 kg with an out-reach of 8.8 m, and the 1722-T4 having a max. hydraulic reach of 10.9 m and a max. lifting capacity of 6.715 kg.

When choosing the 1720-T Series you get a strong and flexible loader characterized by low self weight, user friendly operation, the latest hydraulics and a perfect finish as well as a thoroughly tested loader where great importance has been attached to safety in all details.



ООО «В-КРАН»

Фактический адрес:
194292, Санкт-Петербург, пр. Культуры, 40
Промзона «Парнас»

Почтовый адрес:
194292, Санкт-Петербург, а/я 112.
Тел: (812) 449-13-80, 972-40-40
Тел/факс: (812) 449-13-80, 449-13-83

www.v-kran.ru
e-mail: sale@v-kran.ru



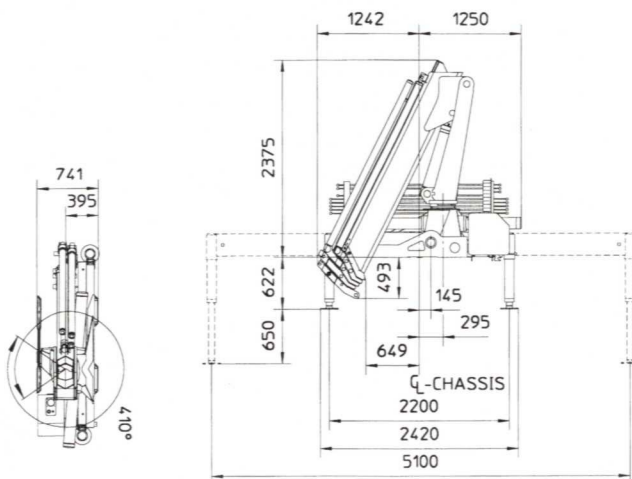
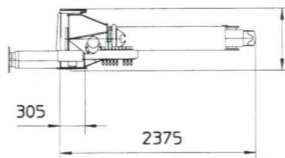
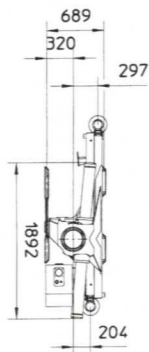
Højbjerg Maskinfabrik A/S

200, Oddervej
DK-8270 Højbjerg
Denmark

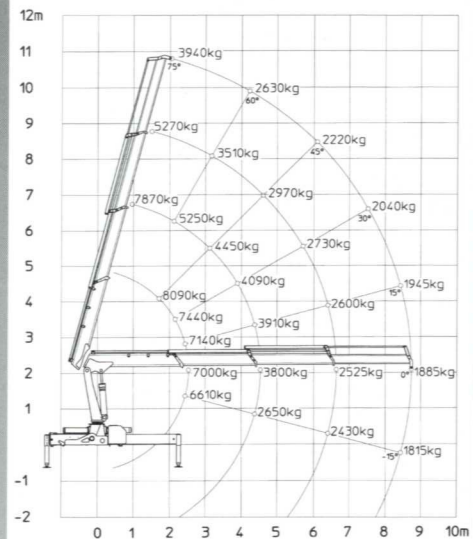
Tel. +45 86 27 08 00
Fax +45 86 27 07 44

Technical Data, HMF 1720-T Series

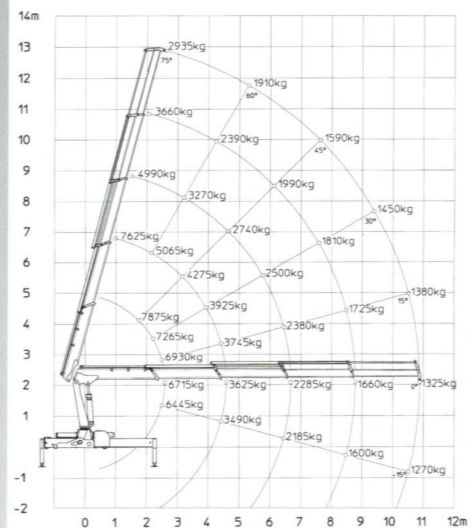
Loading group B3		1722-T3	1722-T4
Load moment	tm	17.7	17.5
Hydraulic reach	m	8.8	10.9
Slewing angle	°	410	410
Slewing torque	kgm	2000	2000
Height above chassis	mm	2375	2375
Width, folded	mm	2492	2492
Length of base, no extra valves	mm	741	741
Length of base with extra valves	mm	741	741
Stabilizer spread, standard	mm	5100	5100
Stabilizer spread, special	mm	6430	6430
Weight excl. stabilizers	kg	1625	1775
Weight of stabilizers	kg	250	250
Working pressure	MPa	23.0	23.0
Pump performance	l/min.	50	50
Power consumption	kW	19	19
Oil tank capacity in base	l	20	20
Oil tank capacity, sep.	l	80	80



1722-T3



1722-T4



1722 T3



1722 T4

