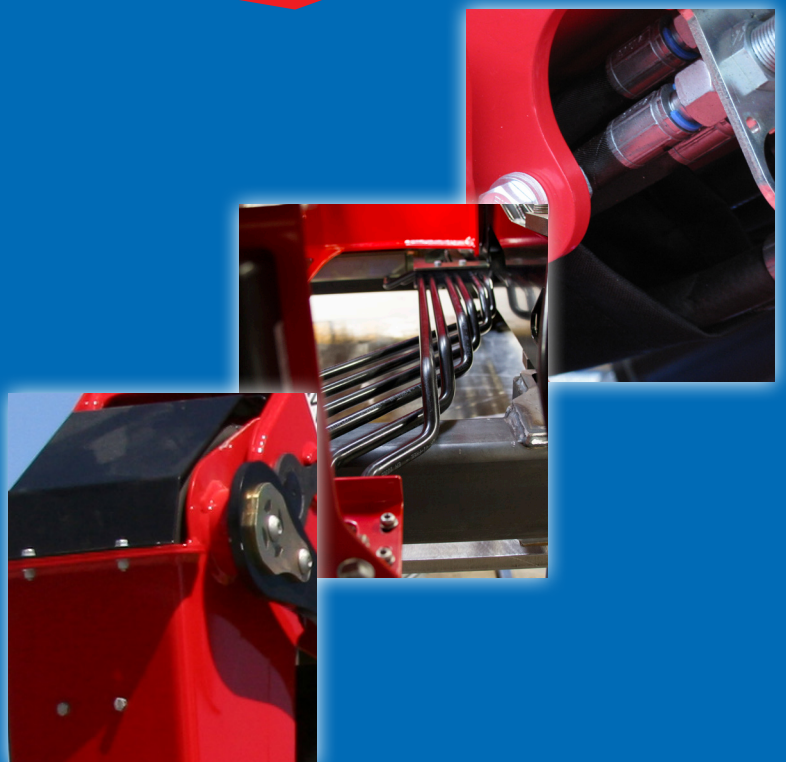


# KS Cranes



- power to lift





- power to lift.

HMF MODELS WITH SHORT JIB (KS)		1100-KS	1110-KS	1220-KS	1230-KS	1220-KS	1230-KS
Type		KS	KS	KSX	KSX	KSX+	KSX+
<b>TECHNICAL DATA</b>							
Load moment K1, HC1 / HD4	tm	10,6	10,7	11,8	11,9	11,7	11,9
Tare weight K1 incl. stabilizers	kg	1260	1225	1260	1225	1260	1225
Maximum reach	m	9,7	9,7	9,7	9,7	9,7	9,7
Maximum lifting capacity	kg	2810	2860	3115	3170	3115	3170
Length of crane	m	0,75	0,75	0,75	0,75	0,75	0,75
Slewing angle	°	420	420	420	420	420	420
<b>GEOMETRY</b>							
Boom system, number of extensions		3	3	3	3	3	3
Short boom system (KS)		✓	✓	✓	✓	✓	✓
Single Power Plus link arm system		-	✓	-	✓	-	✓
Dual Power Plus link arm system		✓	-	✓	-	✓	-
Over-bending, 15°		✓	✓	✓	✓	✓	✓
<b>CONTROL MODE</b>							
Ground control (JS)		✓	✓	✓	✓	-	-
Stand-up control (HS)		✓	✓	✓	✓	-	-
Stand-up control with radio remote control (HS-RC)		-	-	-	-	✓	✓
Top seat with radio remote control (TS-RC)		-	-	-	-	✓	✓
Radio remote control (RC)		✓	✓	-	-	✓	✓
<b>CONTROLS</b>							
Manual control valve (-h)		✓	✓	✓	✓	-	-
Hydraulic speed adaptation system (HDL-h)		-	-	✓	✓	-	-
Electronic speed adaptation system (HDL-d)		-	-	-	-	✓	✓
Radio remote controlled control valve (RC-h)		✓	✓	-	-	-	-
Radio remote controlled proportional control valve (RC-d)		-	-	-	-	✓	✓
<b>OPTIONS E.G.</b>							
Fixed flow pump		✓	✓	✓	✓	+	+
Variable flow pump		-	-	-	-	+	+
Hydraulically extensible stabilizer beams		✓	✓	✓	✓	✓	✓
Radio remote controlled stabilizers (RC)		-	-	-	-	+	+
EVS stability safety system		-	-	-	-	+	+
		✓ = Basis		+ = Option		- = Fås ikke	

Grab in a platform body of 4 m



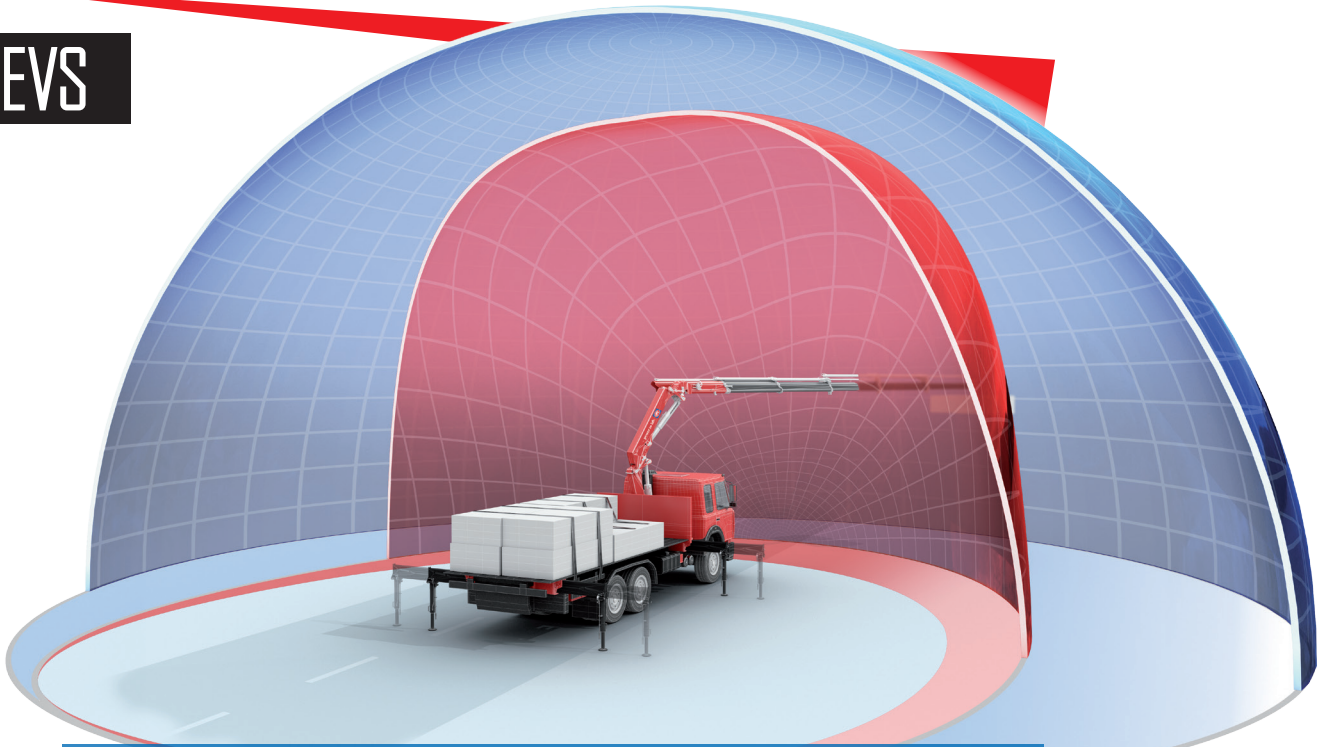
High lifting height





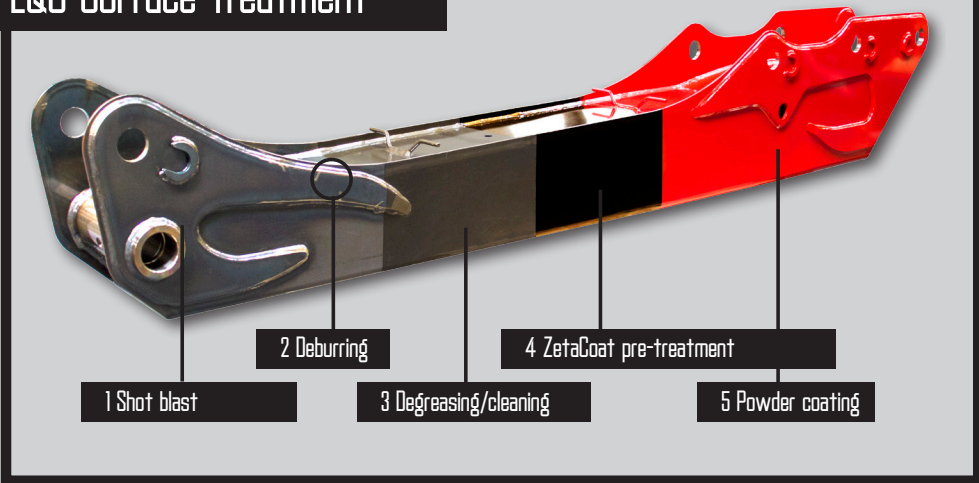
- power to lift.

# EVS



**Use the Load and reach further**  
EVS provides full capacity right to the limit - also in high positions.

## EQC Surface treatment



## Internal hose routing

Hard wearing, nice and clean design with hydraulic hoses that are fed in nylon drag chains internally in the stabilizer beam. This offers a long life span as the hoses lie well protected against wear and squeezing damage.



## RCL 5300

The RCL 5300 monitors the load moment of the crane as well as the vehicle stability and thereby, the safety of the crane operator.



## Radio remote control

HMF's radio remote control offers an efficient, precise, safe and labour-saving tool.



## Ideal grab-handling crane

Vertical main boom with increased hook height and optimized geometry provide flexibility and a fast pattern of movement.



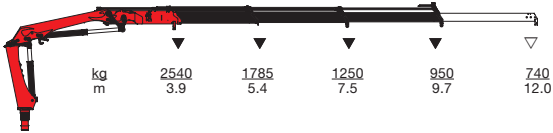
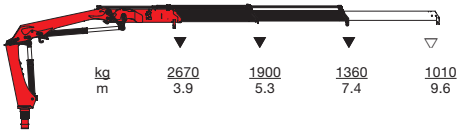
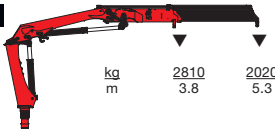
## Large slewing area

A slewing area of no less than 420° covers the entire working area - also right into the corners of the platform body.

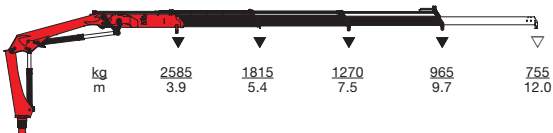
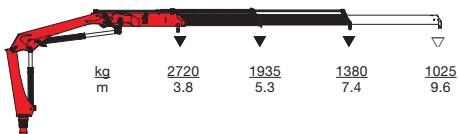
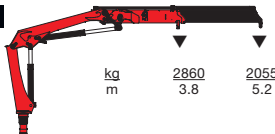


- power to lift.

**HMF 1100-KS**

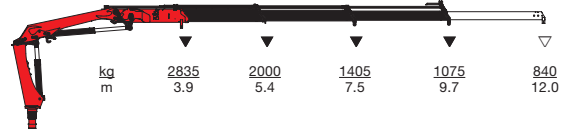
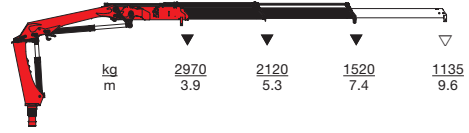
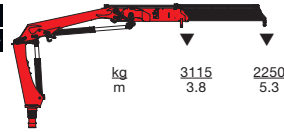


**HMF 110-KS**

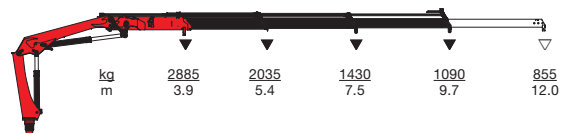
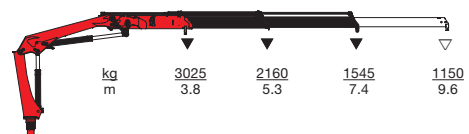
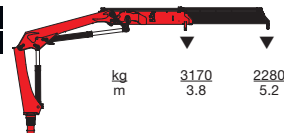


▼ Lifting capacity, no manual extensions  
 ▽ Lifting capacity with manual extensions

**HMF 1220-KSX  
HMF 1220-KSX+**



**HMF 1230-KSX  
HMF 1230-KSX+**



- power to lift

**HMF Group A/S**

Oddervej 200 + DK-8270 Højbjerg  
Tlf.: +45 8627 0800 + Fax +45 8627 0744 + info@hmf.dk

[www.hmf.dk](http://www.hmf.dk)

Z008649-06

We reserve the right to introduce improvements and modifications